



In This Issue:

BERARD
SINCE
1945

The Mega Transport Experts

- > The Shipyard | Dredge Ladder Transport & Install
- > Load Out! | The Heater Skid Load Outs
- > Berard Celebrates 75 Years of Excellence
- > Team Member Spotlight | Ravis Belaire

The Shipyard Dredge Ladder Transport & Install



Job Specs

Weight: 450 Tons

Dimensions:

113'L x 19'W

Equipment Used: 28 axle lines of SPMTs, 3 power packs, crane mats & steel plating

The Berard team is well versed in developing innovative solutions to keep projects on schedule. The team transported and installed this 450-ton dredge ladder structure for a shipyard in Louisiana. The ladder was transported through the fabrication yard and oriented to be moved into position at the dredge's stern, which was sitting on the client's dry dock. Berard engineers designed a plan to stack 8 axle lines of SPMTs on top of SPMTs, to utilize the four feet of stroke needed to reach the dredge's required elevation. A combination of lifting the SPMTs and lowering the dry dock made the installation a safe and successful one.





Load Out! Heater Skid Load Outs



Job Specs

Weight: 250,000 lbs

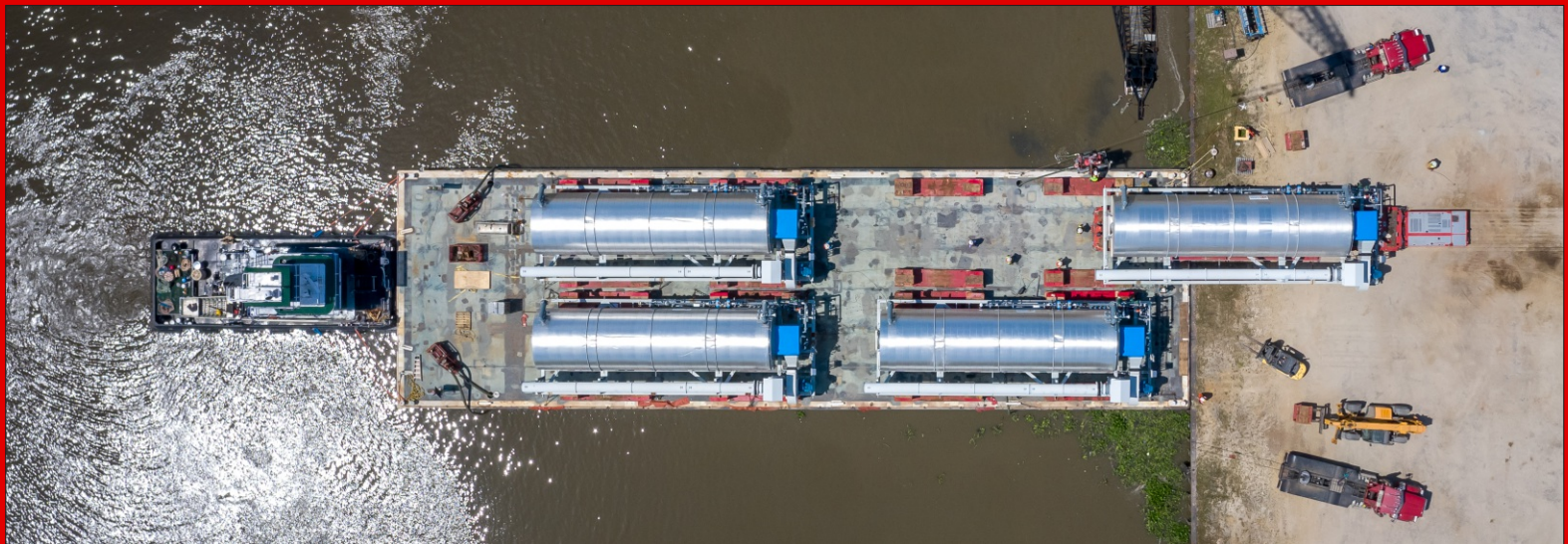
Dimensions:

61'L x 23'W x 23'H

Equipment Used: 12 axle lines of SPMTs, 2 power packs, 2 axle line spacer, loading ramps, high volume water pumps and winches for barge securement

Load outs are a regular occurrence for the Berard team. The team loaded out 4 heater skids in south Louisiana weighing 250,000 lbs, each using 12 axle lines of SPMTs. The cargo was lifted from its position in the fabrication yard and transported to the client's bulkhead for load out. All 4 heater skids were loaded out in record time, all done safely with a happy and very impressed client. The Berard team can help you keep your projects on schedule with cost-effective transport and load-out solutions. Give our sales team a call today, and experience the Berard difference!







**CELEBRATING 75 YEARS OF EXCELLENCE
1945-2020**



**ROY BERARD SR.
1919-2004**

THE FIRST MOVE 1945



In 1945, Roy Berard Sr. moved his first house. He used the one truck he owned as a sugarcane farmer and moved it in one day for \$50. He came home and told his wife Gladys, "I think I'd like to move a few more houses." He moved 18 houses that year. Initially named Roy Berard Building Mover, he renamed it Roy Berard & Sons Inc as his sons joined the company. He continued doing this type of work practically until the day he passed away. Roy watched as his humble company grew into a nationwide, technologically advanced heavy transport company that can move any type of structure imagined.

Roy could be seen at any job site watching as his sons and grandsons took the reigns of the company he built, making suggestions with his years of expertise in the field. After doing so, he would always say, "Now that's something you don't learn in the books." Anyone working in the business could assure this statement to be true. What happened that day in 1945 was more than a house move; it was a spark that ignited a passion, one that has been carried on through his sons and grandsons.

Happy 75th anniversary Berard Transportation, and thanks and appreciation to our dad, grandfather, and founder, Roy Berard. How we wish you could be here to see what you created, not only a company, but a legacy and a passion that lives on in every project.



> Team Member Spotlight

Ravis Belaire

Rigger | Escort Driver



Ravis Belaire has been a part of the Berard team since September of 2017 and serves the team as one of our talented riggers and escort drivers. He's a dedicated hard worker and is always ready to help the team.

When asked what he likes about his job, Ravis says, "Anything and everything. It's very interesting, and I'm always learning new things. I like the people I work with and enjoy working for a great company".

Ravis and his wife Tina have been married for 25 years and have 2 sons, Nicholas & Reed. In his off time, he enjoys fishing & hunting.



> Birthdays @ Berard

Happy Birthday!

Happy Birthday to These Dedicated Team Members!

Ravis Belaire
Dylan Landry
Harley Mitchell
Brianna O'Brien
Elle Berard